



ENERG Y IJA
 енергия · ενέργεια IE IA

STIEBEL ELTRON

HPA-O 8 CS Plus
 compact D Set



A+



A

57 dB



- 9 kW
- 9 kW
- 8 kW

2019

811/2013

Product datasheet: Combi heater to regulation (EU) no. 811/2013

		HPA-O 8 CS Plus compact D Set
		239062
Manufacturer		STIEBEL ELTRON
Load profile		L
Energy efficiency class for central heating in moderate climates for medium temperature applications		A+
Energy efficiency class for central heating in moderate climates for low temperature applications		A+++
Energy efficiency category for DHW heating under moderate climatic conditions		A
Rated heating output in moderate climates for average temperature applications (Prated)	kW	8
Rated heating output in moderate climates for low temperature applications (Prated)	kW	9
Annual energy consumption in moderate climates for average temperature applications (QHE)	kWh/a	4947
Annual energy consumption in moderate climates for low temperature applications (QHE)	kWh/a	4253
Annual power consumption in moderate climates (AEC)	kWh/a	905
Seasonal room heating efficiency in moderate climates for average temperature applications (η_s)	%	123
Seasonal room heating efficiency in moderate climates for low temperature applications (η_s)	%	176
Energy efficiency for DHW heating (η_{wh}) under moderate climatic conditions	%	113
Sound power level external	dB(A)	57
Rated heating output in colder climates for average temperature applications (Prated)	kW	9
Rated heating output in colder climates for low temperature applications (Prated)	kW	9
Rated heating output in warmer climates for average temperature applications (Prated)	kW	7
Rated heating output in warmer climates for low temperature applications (Prated)	kW	8
Annual energy consumption in colder climates for average temperature applications (QHE)	kWh/a	7599
Annual energy consumption in colder climates for low temperature applications (QHE)	kWh/a	5710
Annual energy consumption in warmer climates for average temperature applications (QHE)	kWh/a	2226
Annual energy consumption in warmer climates for low temperature applications (QHE)	kWh/a	1917
Annual power consumption in colder climates (AEC)	kWh/a	949
Annual power consumption in warmer climates (AEC)	kWh/a	717
Seasonal room heating efficiency in colder climates for average temperature applications (η_s)	%	111
Seasonal room heating efficiency in colder climates for low temperature applications (η_s)	%	147
Seasonal room heating efficiency in warmer climates for average temperature applications (η_s)	%	158
Seasonal room heating efficiency in warmer climates for low temperature applications (η_s)	%	209
Energy efficiency for DHW heating (η_{wh}) under colder climatic conditions	%	102
Energy efficiency for DHW heating (η_{wh}) under warmer climatic conditions	%	139



ENERG

енергия · ενέργεια



STIEBEL ELTRON

HPA-O 8 CS Plus compact D Set

Energy label components: boiler icon, radiator icon, tap icon, and energy class labels A+ and A.

Energy efficiency scale for heating (radiator icon). The scale ranges from A+++ (green) to G (red). The final label on the right is A++.

Energy label components: solar panel icon, hot water tank icon, control panel icon, and boiler icon. Each icon is accompanied by a plus sign and a checkbox. The control panel checkbox is marked with an 'X'.

Energy efficiency scale for hot water (tap icon). The scale ranges from A+++ (green) to G (red). The final label on the right is A.

Product datasheet: Composite system consisting of room heater and temperature controller to regulation (EU) no. 811/2013

		HPA-O 8 CS Plus compact D Set
		239062
Manufacturer		STIEBEL ELTRON
Seasonal room heating efficiency in moderate climates for average temperature applications (η_s)	%	123
Temperature controller class		VI
Contribution of temperature controller to room heating energy efficiency	%	4
Room heating energy efficiency of composite system under moderate climatic conditions	%	127
Room heating energy efficiency of composite system under colder climatic conditions	%	115
Room heating energy efficiency of composite system under warmer climatic conditions	%	162
Value of differential between room heating energy efficiency under moderate climatic conditions and that under colder climatic conditions	%	12
Value of differential between room heating energy efficiency under warmer climatic conditions and that under moderate climatic conditions	%	35
Energy efficiency class for central heating in moderate climates for medium temperature applications		A+
Room heating energy efficiency class of composite system under moderate climatic conditions		A++
Energy efficiency category for DHW heating under moderate climatic conditions		A
Load profile		L

Required details about room heater and combi heater with heat pump to regulation (EU) no. 813/2013 & 811/2013

		HPA-O 8 CS Plus compact D Set
		239062
Manufacturer		STIEBEL ELTRON
Heat source		Outside air
Low temperature heat pump		-
With booster heater		x
Combi boiler with heat pump		x
Rated heating output in colder climates for average temperature applications (Prated)	kW	9
Rated heating output in moderate climates for average temperature applications (Prated)	kW	8
Rated heating output in warmer climates for average temperature applications (Prated)	kW	7
Tj = -7 °C heating output, partial load range under moderate climatic conditions (Pdh)	kW	5,1
Tj = 2 °C heating output, partial load range under moderate climatic conditions (Pdh)	kW	4,1
Tj = 7 °C heating output, partial load range under moderate climatic conditions (Pdh)	kW	2,6
Tj = 12 °C heating output, partial load range under moderate climatic conditions (Pdh)	kW	3,3
Tj = dual mode temperature under moderate climatic conditions (Pdh)	kW	6,1
Tj = operating temperature limit under moderate climatic conditions (Pdh)	kW	5,1
For air/water heat pumps:Tj = -15 °C (if TOL< -20 °C) (Pdh)	kW	0
Dual mode temperature in moderate climates (Tbiv)	°C	-5
Seasonal room heating efficiency in colder climates for average temperature applications (ηs)	%	111
Seasonal room heating efficiency in moderate climates for average temperature applications (ηs)	%	123
Seasonal room heating efficiency in warmer climates for average temperature applications (ηs)	%	158
Tj = -7 °C COP, partial load range under moderate climatic conditions (COPd)		1,97
Tj = 2 °C COP, partial load range under moderate climatic conditions (COPd)		3,18
Tj = 7 °C COP, partial load range under moderate climatic conditions (COPd)		4,56
Tj = 12 °C COP, partial load range under moderate climatic conditions (COPd)		5,98
Tj = dual mode temperature under moderate climatic conditions (COPd)		2,28
Tj = operating temperature limit under moderate climatic conditions (COPd)		1,97
For air/water heat pumps:Tj= -15 °C (if TOL< -20 °C) (COPd)		0
Operating temperature limit (Tol)	°C	-7
Heating water operating temperature limit (WTOL)	°C	60
Power consumption, OFF state (Poff)	W	17
Power consumption, thermostat OFF state (PTO)	W	30
Standby power consumption (PSB)	W	17
Power consumption, operating state, with crankcase heating (PCK)	W	5
Booster heater heating output (PSUB)	kW	7,55
Type of energy supply, booster heater		electric
Power control		variable
Sound power level external	dB(A)	57
Annual energy consumption in colder climates for average temperature applications (QHE)	kWh/a	7599
Annual energy consumption in moderate climates for average temperature applications (QHE)	kWh/a	4947
Annual energy consumption in warmer climates for average temperature applications (QHE)	kWh/a	2226
Flow rate, heat source side	m ³ /h	2200
Load profile		L
Daily power consumption (Qelec)	kWh	4,31

Annual power consumption in colder climates (AEC)	kWh/a	949
Annual power consumption in moderate climates (AEC)	kWh/a	905
Annual power consumption in warmer climates (AEC)	kWh/a	717
Energy efficiency for DHW heating (Γ_{wh}) under moderate climatic conditions	%	113



ENERG
енергия · ενέργεια



STIEBEL ELTRON HSBC 200



55 W

189 L

2017

812/2013

Product datasheet: DHW cylinder to regulation (EU) no. 812/2013

		HSBC 200
		233510
Manufacturer		STIEBEL ELTRON
Model identification of the supplier		HSBC 200
Energy efficiency class		B
Standby losses	W	55
Cylinder capacity	l	189



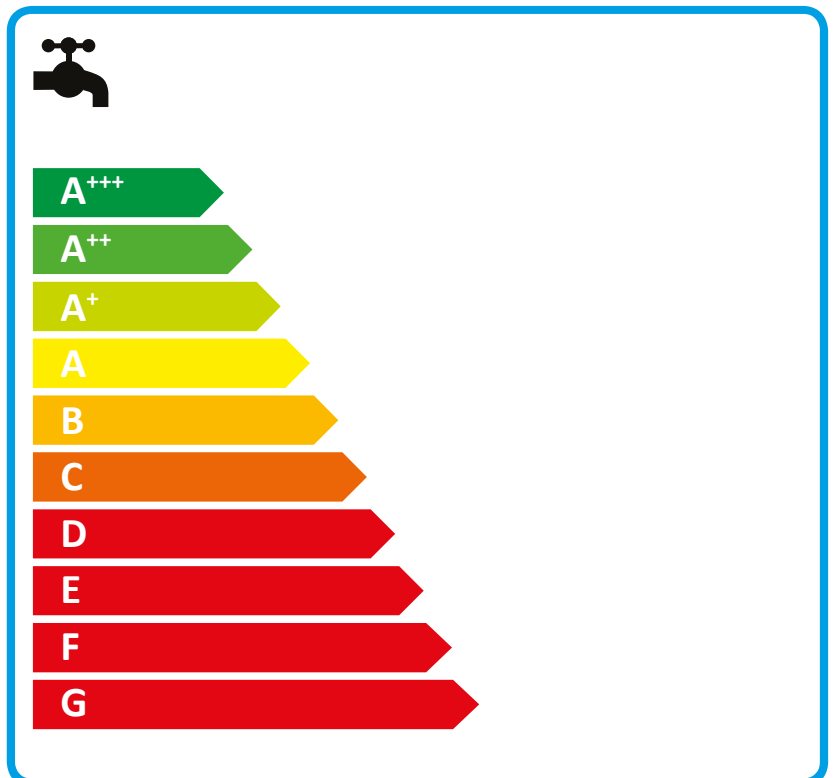
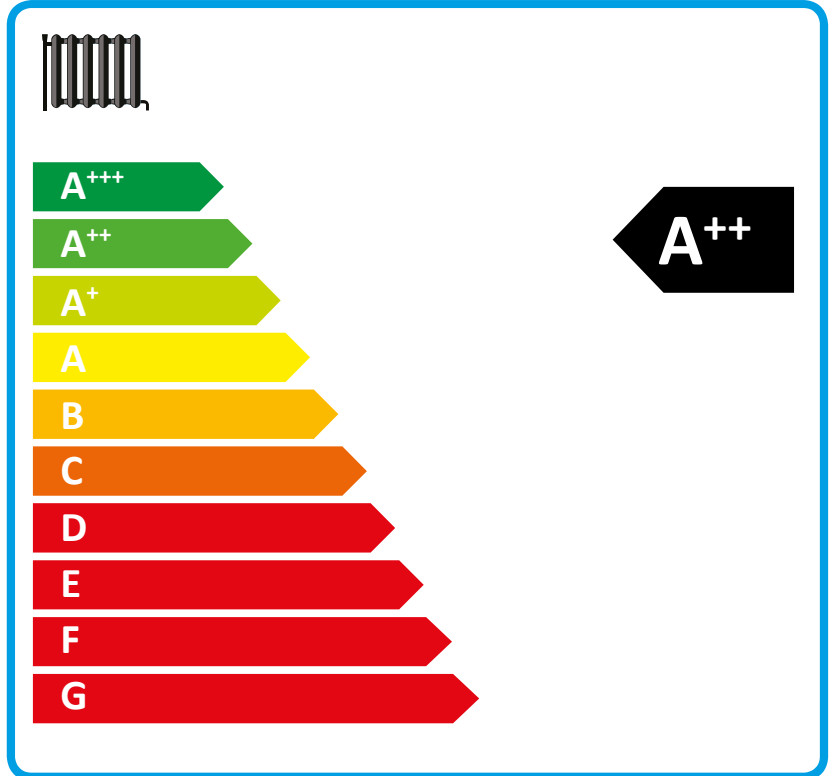
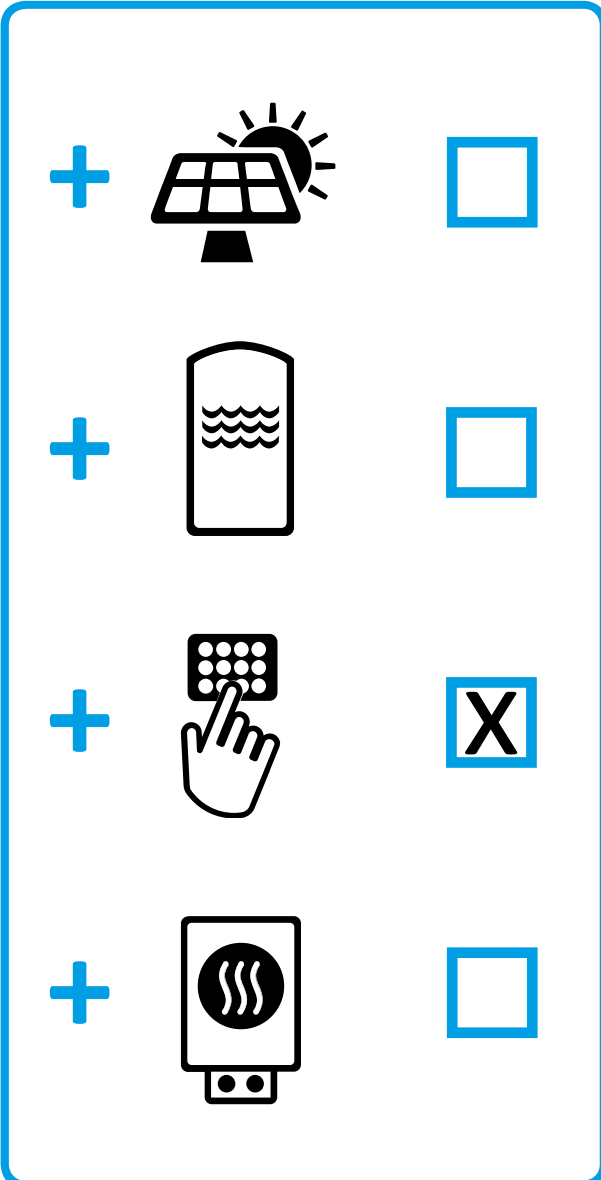
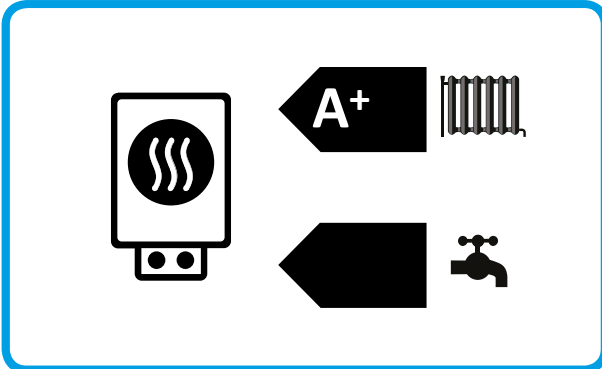
ENERG

енергия · ενέργεια



STIEBEL ELTRON

HPA-O 8 CS Plus



Product datasheet: Composite system consisting of room heater and temperature controller to regulation (EU) no. 811/2013

		HPA-O 8 CS Plus
		238987
Manufacturer		STIEBEL ELTRON
Seasonal room heating efficiency in moderate climates for average temperature applications (η_s)	%	123
Temperature controller class		VI
Contribution of temperature controller to room heating energy efficiency	%	4
Room heating energy efficiency of composite system under moderate climatic conditions	%	127
Room heating energy efficiency of composite system under colder climatic conditions	%	115
Room heating energy efficiency of composite system under warmer climatic conditions	%	162
Value of differential between room heating energy efficiency under moderate climatic conditions and that under colder climatic conditions	%	12
Value of differential between room heating energy efficiency under warmer climatic conditions and that under moderate climatic conditions	%	35
Energy efficiency class for central heating in moderate climates for medium temperature applications		A+
Room heating energy efficiency class of composite system under moderate climatic conditions		A++

Required details about room heater and combi heater with heat pump to regulation (EU) no. 813/2013 & 811/2013

		HPA-O 8 CS Plus
		238987
Manufacturer		STIEBEL ELTRON
Heat source		Outside air
Low temperature heat pump		-
With booster heater		-
Combi boiler with heat pump		-
Rated heating output in colder climates for average temperature applications (Prated)	kW	9
Rated heating output in moderate climates for average temperature applications (Prated)	kW	8
Rated heating output in warmer climates for average temperature applications (Prated)	kW	7
Tj = -7 °C heating output, partial load range under moderate climatic conditions (Pdh)	kW	5,1
Tj = 2 °C heating output, partial load range under moderate climatic conditions (Pdh)	kW	4,1
Tj = 7 °C heating output, partial load range under moderate climatic conditions (Pdh)	kW	2,6
Tj = 12 °C heating output, partial load range under moderate climatic conditions (Pdh)	kW	3,3
Tj = dual mode temperature under moderate climatic conditions (Pdh)	kW	6,1
Tj = operating temperature limit under moderate climatic conditions (Pdh)	kW	5,1
For air/water heat pumps:Tj = -15 °C (if TOL< -20 °C) (Pdh)	kW	0
Dual mode temperature in moderate climates (Tbiv)	°C	-5
Seasonal room heating efficiency in colder climates for average temperature applications (ηs)	%	111
Seasonal room heating efficiency in moderate climates for average temperature applications (ηs)	%	123
Seasonal room heating efficiency in warmer climates for average temperature applications (ηs)	%	158
Tj = -7 °C COP, partial load range under moderate climatic conditions (COPd)		1,97
Tj = 2 °C COP, partial load range under moderate climatic conditions (COPd)		3,18
Tj = 7 °C COP, partial load range under moderate climatic conditions (COPd)		4,56
Tj = 12 °C COP, partial load range under moderate climatic conditions (COPd)		5,98
Tj = dual mode temperature under moderate climatic conditions (COPd)		2,28
Tj = operating temperature limit under moderate climatic conditions (COPd)		1,97
For air/water heat pumps:Tj= -15°C (if TOL< -20 °C) (COPd)		0
Heating water operating temperature limit (WTOL)	°C	60
Power consumption, OFF state (Poff)	W	17
Power consumption, thermostat OFF state (PTO)	W	30
Standby power consumption (PSB)	W	17
Power consumption, operating state, with crankcase heating (PCK)	W	5
Booster heater heating output (PSUB)	kW	7,55
Type of energy supply, booster heater		electric
Power control		variable
Sound power level external	dB(A)	57
Annual energy consumption in colder climates for average temperature applications (QHE)	kWh/a	7599
Annual energy consumption in moderate climates for average temperature applications (QHE)	kWh/a	4947
Annual energy consumption in warmer climates for average temperature applications (QHE)	kWh/a	2226
Flow rate, heat source side	m ³ /h	2200