



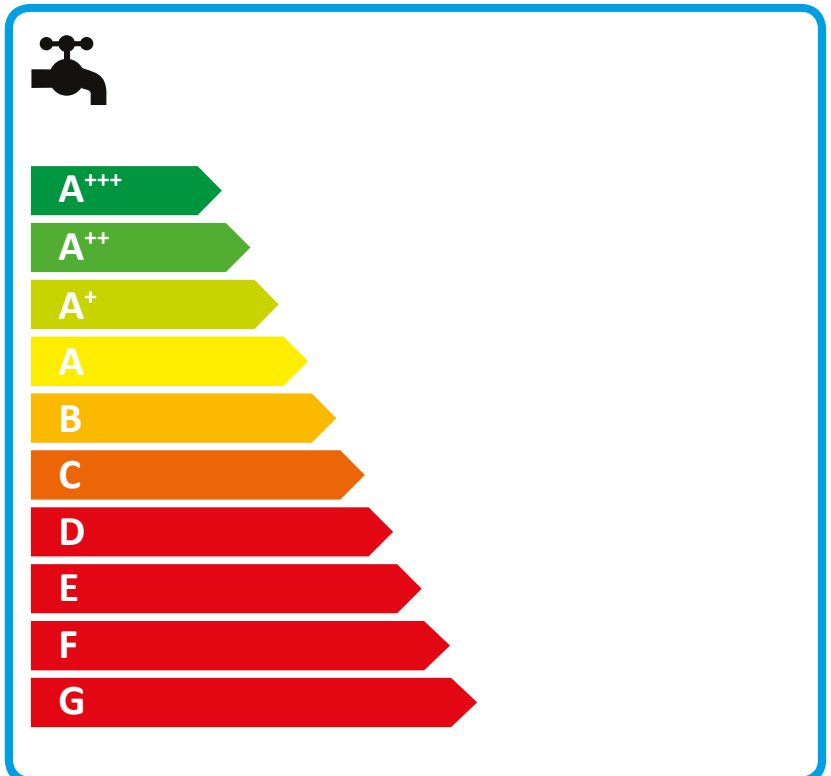
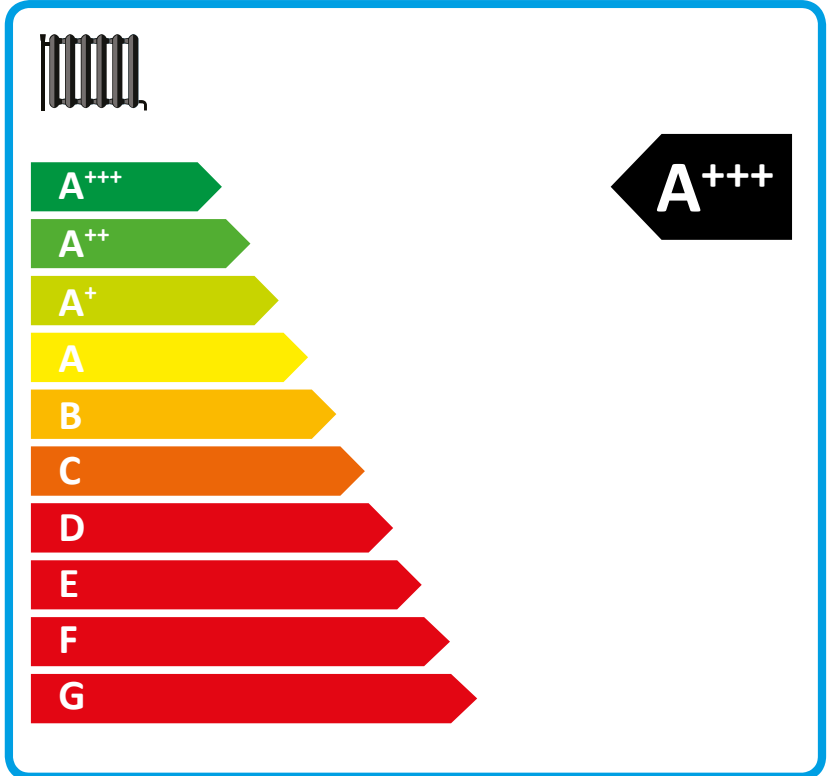
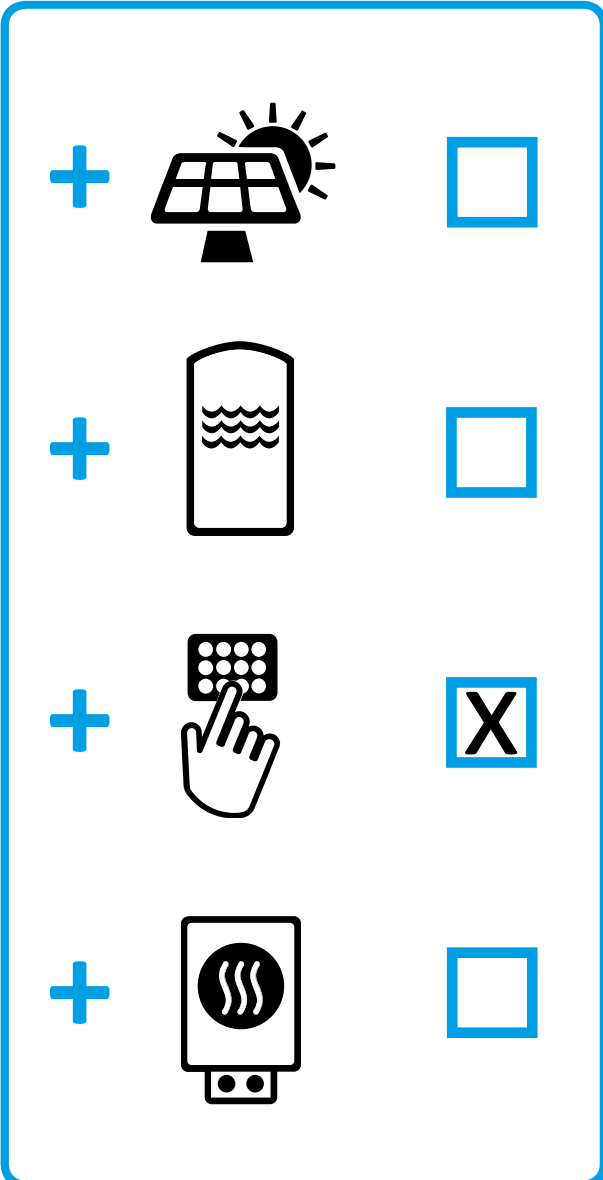
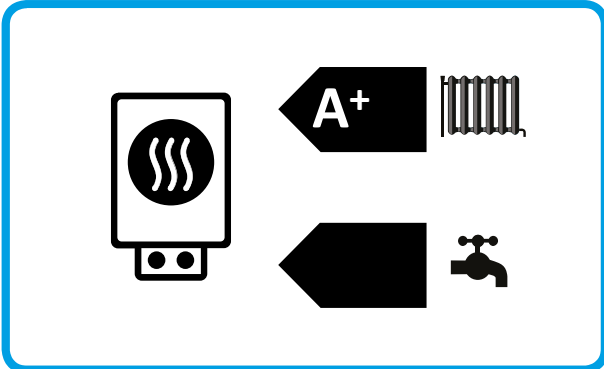
# ENERG

енергия · ενέργεια



**STIEBEL ELTRON**

LWZ 5 S Trend



**Product datasheet: Composite system consisting of room heater and temperature controller to regulation (EU) no. 811/2013**

		<b>LWZ 5 S Trend</b>
		201292
Manufacturer		STIEBEL ELTRON
Energy efficiency for central heating in moderate climates for medium temperature applications	%	121
Temperature controller class		VI
Contribution of temperature controller to room heating energy efficiency	%	4
Room heating energy efficiency of composite system under moderate climatic conditions	%	158
Room heating energy efficiency of composite system under colder climatic conditions	%	139
Room heating energy efficiency of composite system under warmer climatic conditions	%	182
Value of differential between room heating energy efficiency under moderate climatic conditions and that under colder climatic conditions	%	19
Value of differential between room heating energy efficiency under warmer climatic conditions and that under moderate climatic conditions	%	24
Energy efficiency class for central heating in moderate climates for medium temperature applications		A+
Room heating energy efficiency class of composite system under moderate climatic conditions		A+++

		<b>LWZ 5 S Trend</b>
		201292
Manufacturer		STIEBEL ELTRON
Heat source		Outside air
Low temperature heat pump		-
With booster heater		x
Combi boiler with heat pump		-
Rated heating output in moderate climates for medium temperature applications	kW	7
Tj = -7 °C heating output, partial load range under moderate climatic conditions (Pdh)	kW	5,54
Tj = 2 °C heating output, partial load range under moderate climatic conditions (Pdh)	kW	3,41
Tj = 7 °C heating output, partial load range under moderate climatic conditions (Pdh)	kW	2,71
Tj = 12 °C heating output, partial load range under moderate climatic conditions (Pdh)	kW	3,19
Tj = dual mode temperature under moderate climatic conditions (Pdh)	kW	5,54
Tj = operating temperature limit under moderate climatic conditions (Pdh)	kW	2,67
Tj = -7 °C COP, partial load range under moderate climatic conditions (COPd)		2,26
Tj = 2 °C COP, partial load range under moderate climatic conditions (COPd)		3,27
Tj = 7 °C COP, partial load range under moderate climatic conditions (COPd)		4,09
Tj = 12 °C COP, partial load range under moderate climatic conditions (COPd)		5,26
Tj = dual mode temperature under moderate climatic conditions (COPd)		2,26
Tj = operating temperature limit under moderate climatic conditions (COPd)		1,88
Dual mode temperature (Tbiv)	°C	-7
Operating temperature limit (Tol)	°C	-10
Heating water operating temperature limit (WTOL)	°C	60
Power consumption, OFF state (Poff)	W	27
Power consumption, thermostat OFF state (PTO)	W	63
Standby power consumption (PSB)	W	27
Power consumption, operating state, with crankcase heating (PCK)	W	35
Booster heater heating output (PSUB)	kW	3,55
Type of energy supply, booster heater		electric
Power control		variable
Sound power level external	dB(A)	52
Sound power level internal	dB(A)	52